

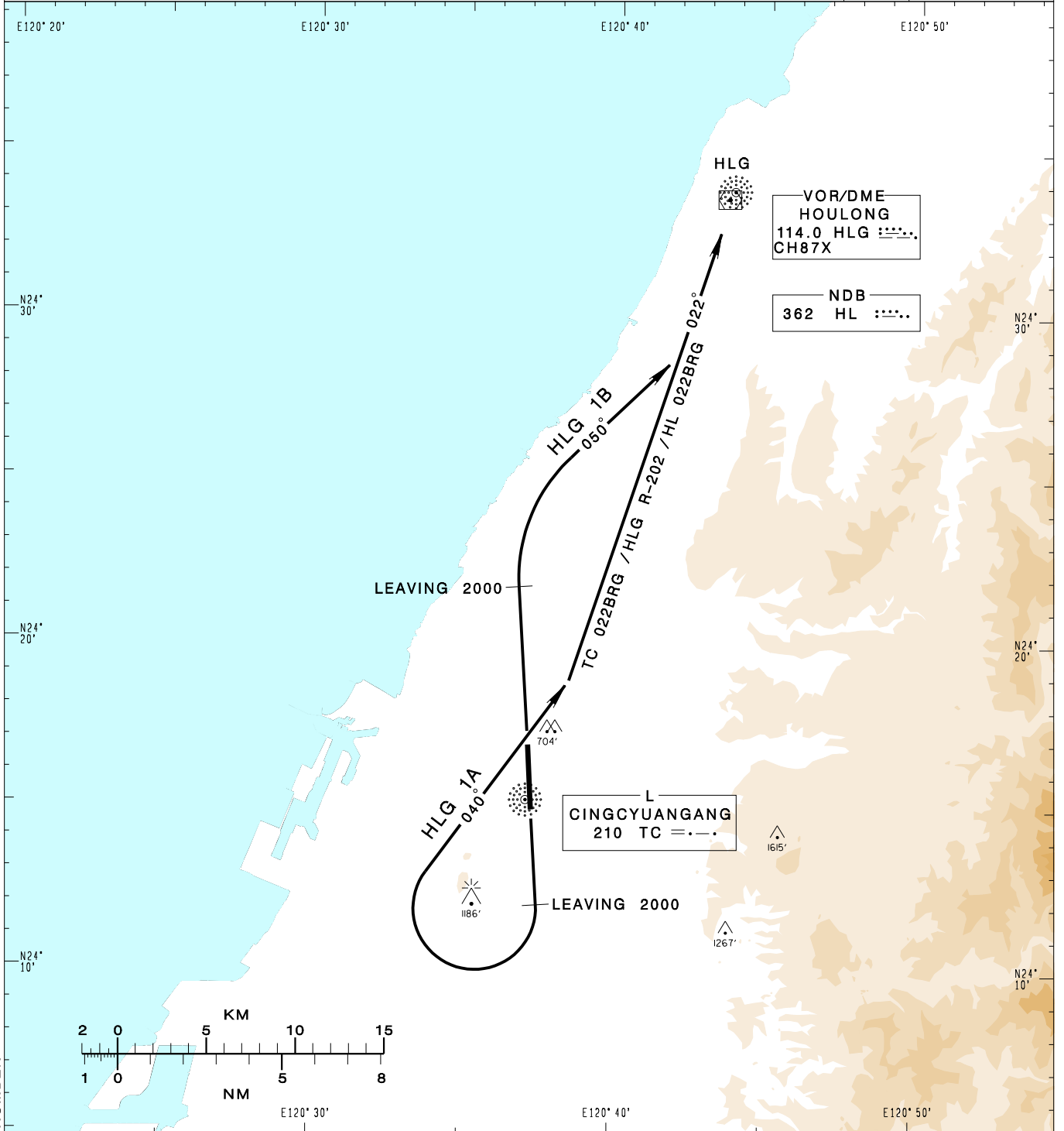
臺中/清泉崗機場
TAICHUNG/CINGCYUANGANG AD

RCMQ SID
HLG 1A(RWY18)
HLG 1B(RWY36)

TAIPEI APP 130.1 129.6	TAICHUNG TWR 118.75 120.25	ATIS 127.75
Apt Elev: 665'	Trans Level: FL130	Trans Alt: 11,000'
BEARINGS ARE MAGNETIC; DISTANCES ARE NAUTICAL MILES; ELEVATIONS, HEIGHTS IN FEET		

VAR 4° W

MSA TC 25NM



CHANGES: NEW PAGE NUMBER

HOULONG ONE ALFA DEPARTURE
 Depart on RWY HDG until leaving 2,000, turn right HDG 040 to track TC 022BRG/HLG R-202/HL 022BRG to HLG/HL.

HOULONG ONE BRAVO DEPARTURE
 Depart on RWY HDG until leaving 2,000, turn right HDG 050 to track TC 022BRG/HLG R-202/HL 022BRG to HLG/HL.

Note:

1. For RWY18/36: Requires a minimum climb gradient of 5% (300ft/NM) until 2000ft.
2. For RWY36: Caution close-in obstacles (trees) 704ft MSL, 150m northeast of DER.